



KEY DRIVE QUICK CONNECTOR HANDLE BEARING REPLACEMENT GUIDE

YOU WILL NEED:

AVAILABLE FROM YOUR DYNAMIC DISTRIBUTOR:

- DYNAMIC GREASE APPLICATOR
- FOOD GRADE GREASE
- 2X UNIVERSAL BEARINGS
- DYNAMIC QUICK CONNECTOR LARGE SEAL

YOU WILL ALSO NEED:

- ADJUSTABLE SPANNER

- A. KEY DRIVE BEARING HOLDER DRIVER
- B. DYNAMIC UNIVERSAL BEARING
- C. BEARING HOLDER SPACER
- D. BEARING HOLDER SMALL SPACER
- E. DYNAMIC UNIVERSAL BEARING
- F. BEARING HOLDER MEDIUM SPACER
- G. BEARING HOLDER NUT
- H. KEY DRIVE QUICK CONNECTOR INCLUDING 1X LARGE SEAL





- USING AN ADJUSTABLE SPANNER PLACED ONTO THE FLAT EDGES OF THE DYNAMIC KEY DRIVE QUICK CONNECTOR, LOOSEN IN AN ANTI-CLOCKWISE DIRECTION.



- REMOVE THE DYNAMIC KEY DRIVE BEARING HOLDER FROM THE KEY DRIVE QUICK CONNECTOR

- PLACE THE DYNAMIC BEARING HOLDER DRIVER SECURELY INTO A VICE



▪ UNSCREW BEARING HOLDER NUT
IN AN ANTI-CLOCKWISE DIRECTION
USING AN ADJUSTABLE SPANNER

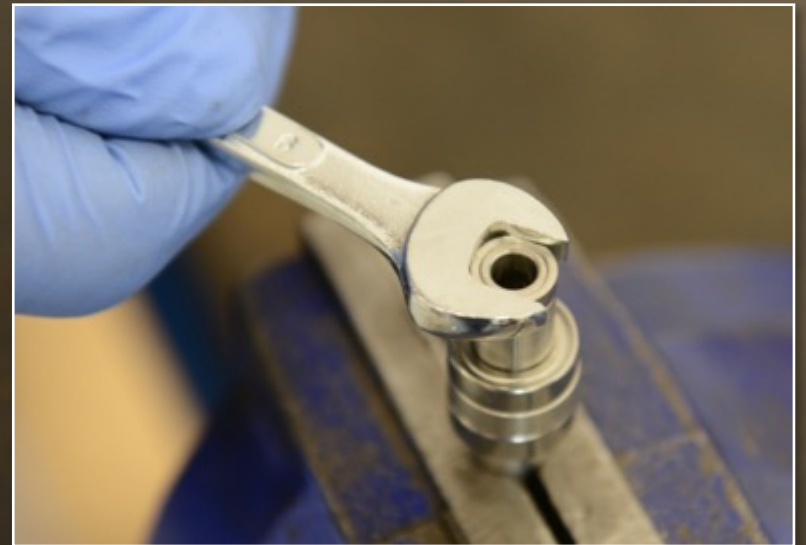
- THE DYNAMIC KEY DRIVE BEARING HOLDER CAN THEN BE SEPARATED OUT INTO THE FOLLOWING PARTS.

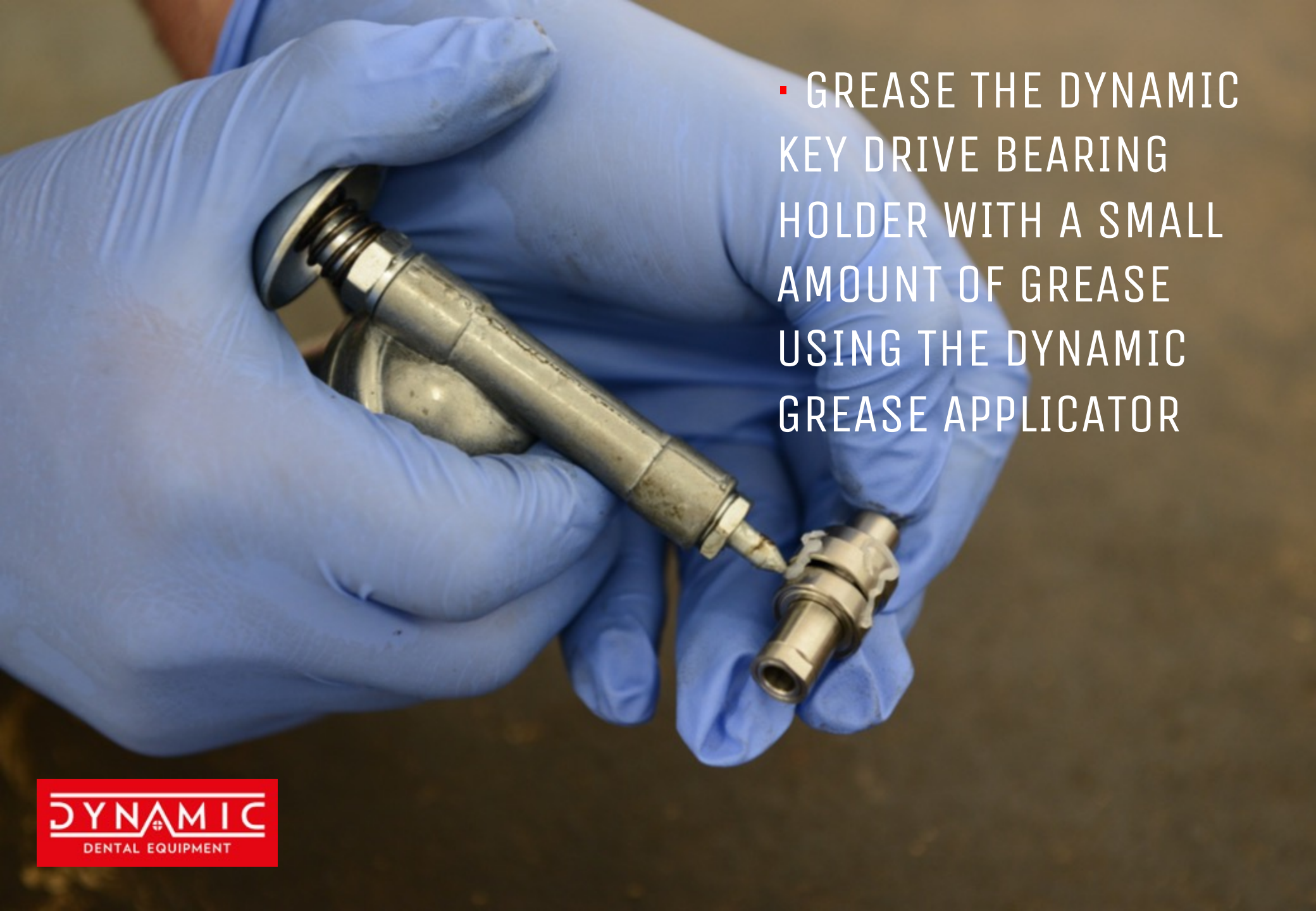
- MAKE SURE YOU KEEP PARTS A, C, D, F, G, H

REPLACE B AND E WITH NEW DYNAMIC UNIVERSAL RACER BEARINGS



- PUT KEY DRIVE BEARING HOLDER COMPONENTS BACK TOGETHER IN CORRECT ORDER AND TIGHTEN BEARING HOLDER NUT WITH ADJUSTABLE SPANNER UNTIL SECURE






- GREASE THE DYNAMIC KEY DRIVE BEARING HOLDER WITH A SMALL AMOUNT OF GREASE USING THE DYNAMIC GREASE APPLICATOR

▪ REPLACE DYNAMIC KEY DRIVE
BEARING HOLDER INTO THE KEY
DRIVE QUICK CONNECTOR
INSERTING THE BEARING
HOLDER NUT END FIRST

- SCREW THE KEY DRIVE QUICK CONNECTOR INTO THE BACK OF THE HANDLE, TIGHTEN USING AN ADJUSTABLE SPANNER UNTIL SECURE.



- MAKE SURE THE LARGE SEAL IS PRESENT ON THE KEY DRIVE QUICK CONNECTOR BEFORE REPLACING IT INTO THE HANDLE