



SQUARE DRIVE QUICK CONNECTOR HANDLE BEARING REPLACEMENT GUIDE

YOU WILL NEED:

AVAILABLE FROM YOUR DYNAMIC DISTRIBUTOR:

- DYNAMIC GREASE APPLICATOR
- FOOD GRADE GREASE
- 2X UNIVERSAL BEARINGS
- DYNAMIC QUICK CONNECTOR LARGE SEAL

YOU WILL ALSO NEED:

- ADJUSTABLE SPANNER

- A. SQUARE DRIVE BEARING HOLDER DRIVER
- B. SQUARE DRIVE PLATE
- C. DYNAMIC UNIVERSAL BEARING
- D. BEARING HOLDER SPACER
- E. BEARING HOLDER SMALL SPACER
- F. DYNAMIC UNIVERSAL BEARING
- G. BEARING HOLDER MEDIUM SPACER
- H. BEARING HOLDER NUT
- I. SQUARE DRIVE QUICK CONNECTOR INCLUDING 1X LARGE SEAL





- USING AN ADJUSTABLE SPANNER PLACED ONTO THE FLAT EDGES OF THE DYNAMIC SQUARE DRIVE QUICK CONNECTOR, LOOSEN IN AN ANTI-CLOCKWISE DIRECTION.



- REMOVE THE DYNAMIC SQUARE DRIVE BEARING HOLDER FROM THE SQUARE DRIVE QUICK CONNECTOR

- PLACE THE DYNAMIC BEARING HOLDER DRIVER SECURELY INTO A VICE

- UNSCREW BEARING HOLDER NUT IN AN ANTI-CLOCKWISE DIRECTION USING AN ADJUSTABLE SPANNER

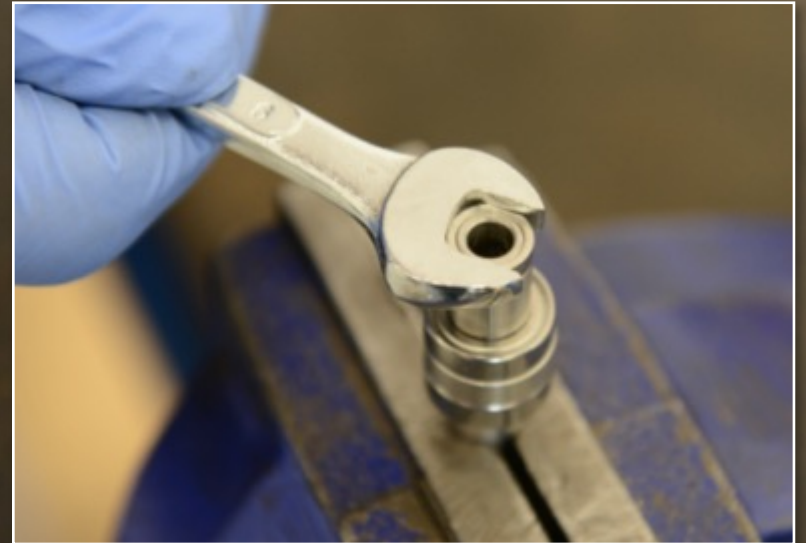
▪ THE DYNAMIC SQUARE
DRIVE BEARING HOLDER CAN
THEN BE SEPARATED OUT
INTO THE FOLLOWING PARTS.


▪ MAKE SURE YOU KEEP PARTS
A, B, D, E, G, H, I

REPLACE C AND F WITH NEW
DYNAMIC UNIVERSAL RACER
BEARINGS



- PUT SQUARE DRIVE BEARING HOLDER COMPONENTS BACK TOGETHER IN CORRECT ORDER AND TIGHTEN BEARING HOLDER NUT WITH ADJUSTABLE SPANNER UNTIL SECURE

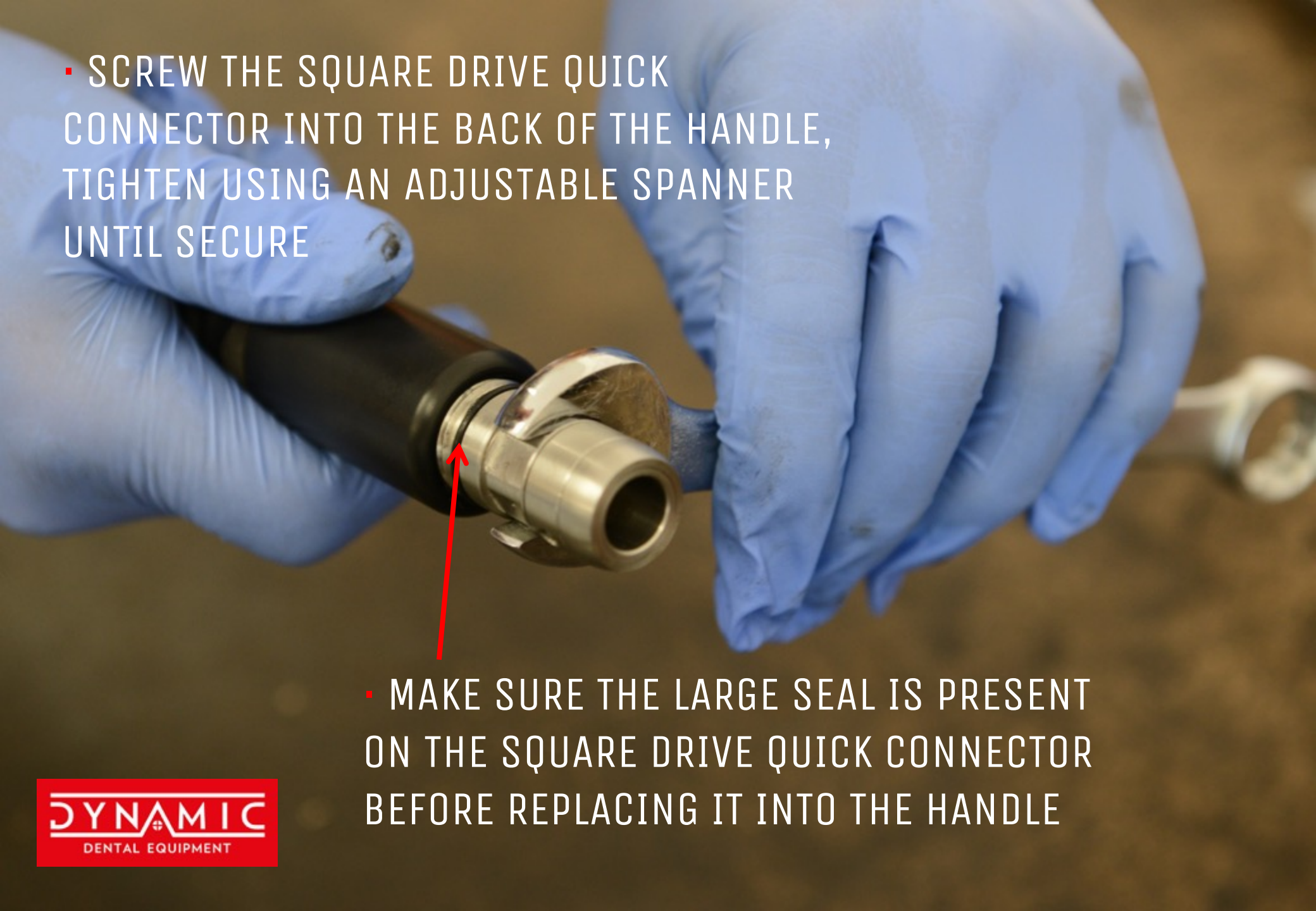


A close-up photograph showing a person's hands wearing blue nitrile gloves. The hands are holding two metal dental components. One component is a long, cylindrical drive bearing holder with a hexagonal base. The other is a smaller, more complex component with a gear-like structure. The person is using a small applicator to apply a small amount of grease to the contact point between the two components. The background is a neutral, slightly textured surface.

▪ GREASE THE
DYNAMIC SQUARE
DRIVE BEARING
HOLDER WITH A
SMALL AMOUNT OF
GREASE USING THE
DYNAMIC GREASE
APPLICATOR

▪ REPLACE DYNAMIC SQUARE
DRIVE BEARING HOLDER INTO
THE SQUARE DRIVE QUICK
CONNECTOR INSERTING THE
BEARING HOLDER NUT END FIRST





- SCREW THE SQUARE DRIVE QUICK CONNECTOR INTO THE BACK OF THE HANDLE, TIGHTEN USING AN ADJUSTABLE SPANNER UNTIL SECURE

- MAKE SURE THE LARGE SEAL IS PRESENT ON THE SQUARE DRIVE QUICK CONNECTOR BEFORE REPLACING IT INTO THE HANDLE