



BEARINGS REPLACEMENT (DISC)

A person is shown working on a vehicle's suspension system, specifically the lower control arm area. They are using a grease gun to apply grease to a joint. The background is dark and out of focus, showing some mechanical parts and a person's arm.

YOU WILL NEED:

AVAILABLE FROM YOUR DYNAMIC DISTRIBUTOR:

- DYNAMIC BASIC REPAIR KIT
- DYNAMIC ADVANCED REPAIR KIT
- FOOD GRADE GREASE
- GREASE GUN
- DYNAMIC BEARINGS AND SEAL KIT

YOU WILL ALSO NEED:

- SLIM FLAT HEAD SCREW DRIVER
- VICE
- ADJUSTABLE SPANNER

DYNAMIC BASIC REPAIR KIT

DISC REMOVAL TOOL



HEAD LOCKING TOOL



21mm SPANNER



DYNAMIC ADVANCED REPAIR KIT



MASTER GEAR
RETAINER TOOL



GUARD SECURE TOOL

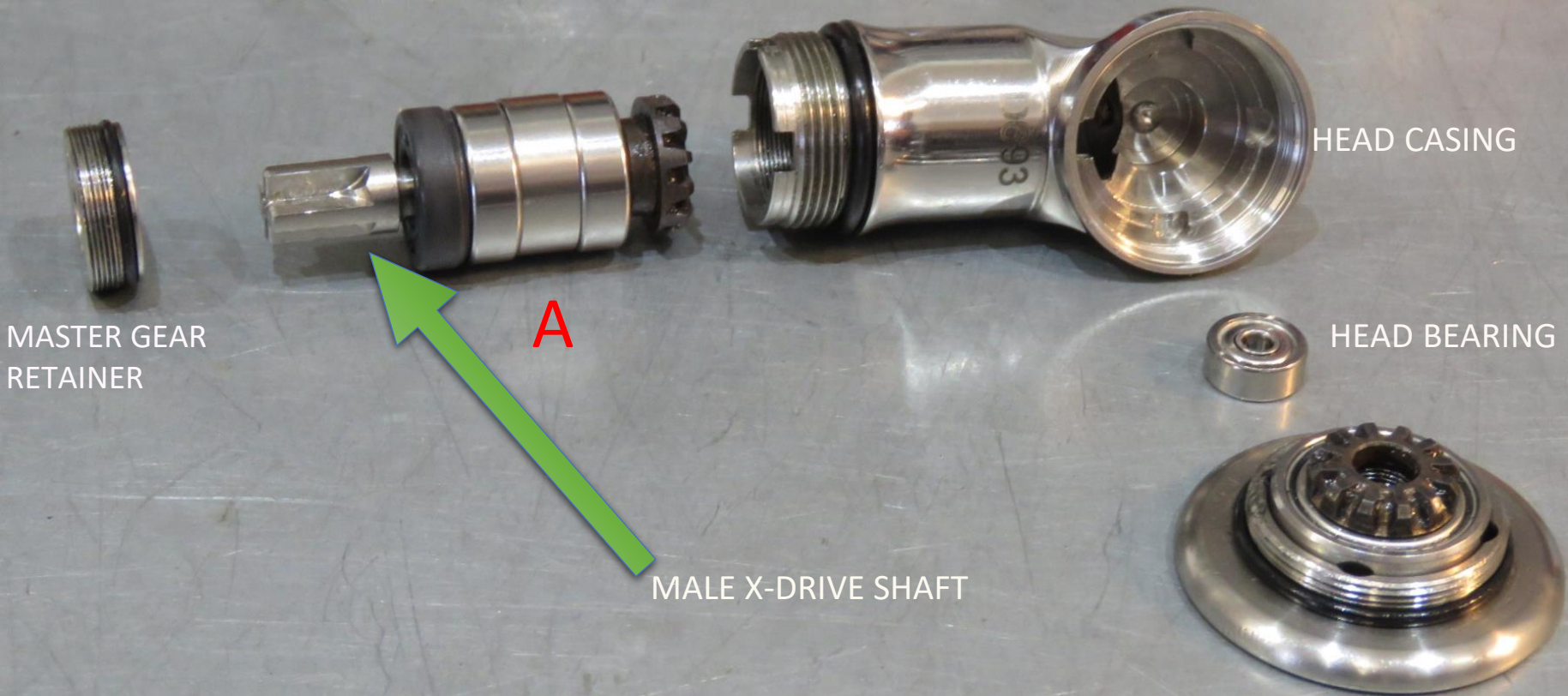


MASTER GEAR REMOVAL TOOL



GUARD REMOVAL TOOL

- **A:** MASTER GEAR ASSEMBLY
- **B:** SLAVE GEAR ASSEMBLY WITH DISC GUARD



DYNAMIC DISC COMPONENTS

MASTER GEAR

MASTER GEAR BEARINGS
AND SPACERS



MASTER GEAR
RETAINER

MALE X-DRIVE SHAFT



SEAL



HEAD CASING

HEAD BEARING

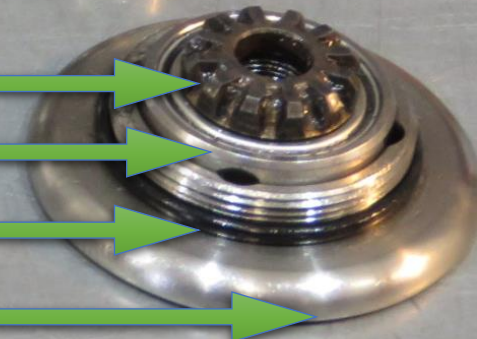


SLAVE GEAR

SLAVE GEAR BEARING

NOTE: THIN SEAL IN PLACE

HEAD GUARD



DYNAMIC
DENTAL EQUIPMENT

DIASSEMBLING THE HEAD

- UNSCREW THE NUT BEHIND THE HEAD IN AN ANTI-CLOCKWISE DIRECTION. IF STIFF USE 21MM SPANNER TO LOOSEN.



- SCREW THE HEAD LOCKING TOOL ON TO THE BACK OF THE HEAD CASING



- PLACE THE DISC REMOVAL TOOL OVER THE DISC




- ENGAGE THE DISC REMOVAL TOOL OVER THE DISC AND ROTATE ANTI-CLOCKWISE

- THEN REMOVE THE DISC



- INSERT THE GUARD
REMOVAL TOOL





- INSERT THE GUARD REMOVAL TOOL ENSURING THE TWO PINS ARE SECURELY INSERTED INTO THE SMALL HOLES ON THE FACE OF THE GUARD


- TURN THE DIAL CLOCKWISE BY HAND UNTIL TIGHT



- UNSCREW LOCKING TOOL

- ATTACH GUARD SECURE
TOOL ROTATING CLOCKWISE
UNTIL TIGHT



- 
- PLACE THE GUARD
SECURE TOOL INTO THE
VICE. USING A SPANNER,
LOOSEN THE GUARD BY
ROTATING ANTI-CLOCKWISE

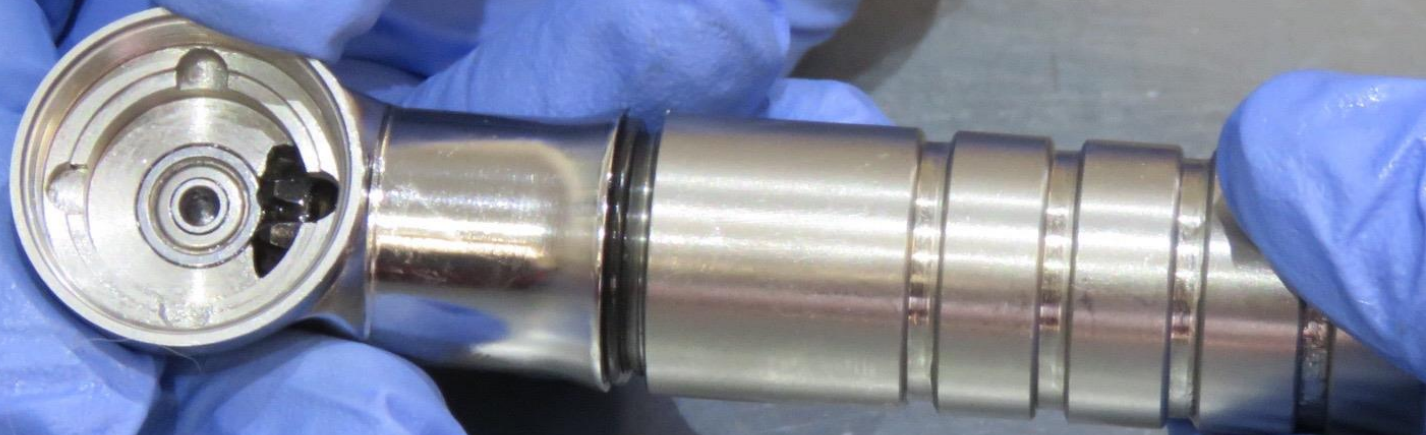
- REMOVE THE SLAVE GEAR ASSEMBLY



- REMOVE GEAR LOCKING TOOL FROM GUARD



- REMOVE THE GUARD
SECURE TOOL



- REMOVE MALE X-DRIVE SHAFT BY ROTATING ANTI-CLOCKWISE



- IF HAVING DIFFICULTY UNDOING THE MASTER GEAR ASSEMBLY FROM THE MALE X-DRIVE SHAFT, THEN GENTLY SECURE IN A VICE. USING A SMALL FLAT HEAD SCREWDRIVER PLACE INTO THE MASTER GEAR AND THEN UNDO THE MALE X-DRIVE SHAFT ANTI-CLOCKWISE WITH AN ADJUSTABLE SPANNER

- INSERT MASTER GEAR RETAINER TOOL MAKING SURE THE MALE PINS LOCATE SECURELY INTO THE HOLES





- USING A SPANNER
UNSCREW THE GEAR
RETAINER TOOL ANTI-
CLOCKWISE

- ONCE THE MASTER GEAR RETAINER TOOL BECOMES LOOSE, REMOVE IT ALONG WITH THE MASTER GEAR RETAINER





- INSERT MASTER GEAR REMOVAL TOOL, TIGHTENING IT IN A CLOCK-WISE DIRECTION

- USING FLAT HEAD SCREWDRIVER, LEVER OUT THE BLACK RUBBER SEAL AS SHOWN





- PULL MASTER GEAR
REMOVAL TOOL TO REMOVE
GEAR FROM HEAD CASING

- USING FLATHEAD SCREWDRIVER, REMOVE HEAD BEARING, CLEAN HEAD CASING USING PAPER TOWELS OR WIPES



- PULL BEARINGS AND SPACERS OFF THE MASTER GEAR



- REMOVE SLAVE RACE BEARING AND SLAVE GEAR BY PRESSING IT OUT WITH YOUR FINGER



TIP: IF STRUGGLING TO REMOVE BEARING

- DISMANTLE SHAFT FROM THE GUARD REMOVAL TOOL BEING CAREFUL NOT TO LOOSE THE BRASS SPACER. THREAD IT INTO THE SLAVE GEAR ROTATING IN A CLOCKWISE ROTATION UNTIL FULLY DONE UP. GENTLY PRESS THE SLAVE BEARING FREE FROM THE SLAVE GEAR





REASSEMBLING THE HEAD

DYNAMIC DISC COMPONENTS

MASTER GEAR

MASTER GEAR BEARINGS
AND SPACERS



MASTER GEAR
RETAINER

MALE X-DRIVE SHAFT



SEAL



HEAD CASING

HEAD BEARING

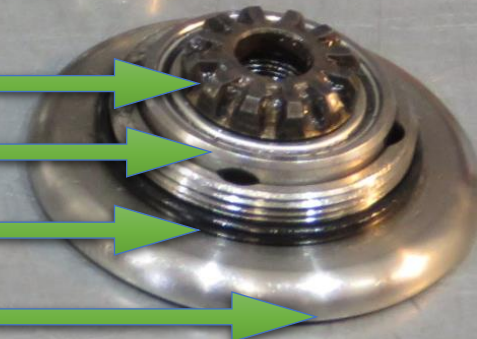


SLAVE GEAR

SLAVE GEAR BEARING

NOTE: THIN SEAL IN PLACE

HEAD GUARD



- MASTER GEAR ASSEMBLY CONSISTS OF:
A: MASTER GEAR
B: MASTER BEARING
C: MASTER BEARING OUTER SPACER
D: MASTER BEARING INNER SPACER
E: MASTER BEARING
F: MASTER BEARING SEAL
G: MALE X-DRIVE SHAFT






- PRESS THE SLAVE GEAR INTO THE SLAVE BEARING, SOMETIMES A GENTLE TAP WITH A NYLON HAMMER MAY BE REQUIRED



- PRESS THE BEARING INTO THE GUARD



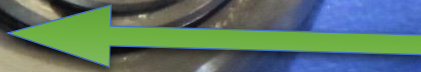
- ATTACH GUARD REMOVAL TOOL ENSURING THE PINS FIT SECURELY INTO THE HOLES ON THE FACE OF THE GUARD. **MAKE SURE THE BRASS WASHER IS IN PLACE AS SHOWN.** TIGHTEN THE DIAL WHILST RESTRICTING THE MOVEMENT OF THE GEAR WITH YOUR THUMB

- PUSH NEW HEAD BEARING FIRMLY INTO PLACE.



- ATTACH GUARD
SECURE TOOL

- REPLACE SLAVE GEAR ASSEMBLY, TIGHTEN CLOCKWISE



NOTE: THIN SEAL IN PLACE



- REMOVE GUARD SECURE TOOL



- TO RE-BUILD MASTER GEAR ASSEMBLY, START THE ASSEMBLY IN THE FOLLOWING ORDER:

A:MASTER GEAR

B:MASTER BEARING

C:MASTER BEARING OUTER SPACER

D:MASTER BEARING INNER SPACER

E:MASTER BEARING



IMPORTANT: PARTS F AND G ARE ADDED LATER

F: MASTER BEARING SEAL (GREASE SEAL)

G:M4 MALE X-DRIVE SHAFT



- 
- A close-up photograph showing a person wearing blue nitrile gloves. They are using a metal grease gun to apply a thick, white grease to a small, cylindrical metal component. The component has a flange with several small holes. The background is a plain, light-colored surface.
- ADD A SMALL AMOUNT OF GREASE ONTO THE EXTERNAL EDGE OF THE BEARINGS AND SPACER

- PUSH MASTER GEAR ASSEMBLY FULLY DOWN INTO THE CASING, THEN PUSH THE SEAL FIRMLY DOWN USING THE GEAR TOOL UPSIDE DOWN UNTIL IT MEETS THE BEARING

1



3



2



4



- INSERT THE MALE X
DRIVE SHAFT AND
TIGHTEN BY HAND CLOCK-
WISE UNTIL SECURE



DYNAMIC
DENTAL EQUIPMENT

- PLACE THE GEAR RETAINER TOOL ONTO THE MASTER GEAR RETAINER



NOTE: RUBBER SEAL
MUST BE PRESENT

- INSERT THE MASTER GEAR RETAINER WITH THE GEAR RETAINER TOOL. **CAREFUL NOT TO CROSS THREAD.** TIGHTEN WITH A SPANNER IN A CLOCK-WISE ROTATION UNTIL SECURE



- SCREW THE
HEAD LOCKING
TOOL ON



- UNSCREW THE
GUARD REMOVAL
TOOL ANTI-
CLOCKWISE AND
REMOVE





- INSERT THE DISC INTO THE DISC REMOVAL TOOL AND PLACE INTO THE GUARD. TIGHTEN THE DISC CLOCKWISE UNTIL SECURE

- UNDO THE LOCKING TOOL ANTI-CLOCKWISE AND REMOVE



- APPLY TWO SHOTS OF FOOD LUBE GREASE INTO THE GREASE NIPPLE AS SHOWN, AND AROUND THE MALE X-DRIVE AND THREAD



- ATTACH HEAD BACK ONTO THE SHAFT BY TIGHTENING THE NUT ON THE TOP OF THE SHAFT IN A CLOCKWISE DIRECTION. TAKING CARE NOT TO CROSS THREAD.
- **IMPORTANT ONLY HAND TIGHTEN**

