

A dark, moody photograph of a dental procedure. A patient is reclined in a dental chair, and a technician's hands are visible adjusting a large, metallic disc head component of the chair. The scene is dimly lit, with some light reflecting off the metal parts of the chair and the technician's hands.

DYNAMIC

DENTAL EQUIPMENT

DYNAMIC DISC HEAD REFURBISHMENT

A close-up photograph of a person's hands working on a car's master cylinder. The person is using a tool to adjust or repair the component. The background is dark and out of focus, showing parts of the car's chassis and suspension.

YOU WILL NEED:

AVAILABLE FROM YOUR DYNAMIC DISTRIBUTOR:

- DYNAMIC ADVANCED REPAIR KIT
- DYNAMIC BASIC REPAIR KIT
- MASTER GEAR ASSEMBLY
- SLAVE GEAR ASSEMBLY WITH DISC GUARD
- GREASE GUN
- FOOD GRADE GREASE

ALSO REQUIRED:

- ADJUSTABLE SPANNER
- BENCH VICE
- SMALL FLAT HEAD SCREWDRIVER

DYNAMIC BASIC REPAIR KIT

DISC REMOVAL TOOL



HEAD LOCKING TOOL



21mm SPANNER



DYNAMIC ADVANCED REPAIR KIT



MASTER GEAR
RETAINER TOOL



GUARD SECURE TOOL

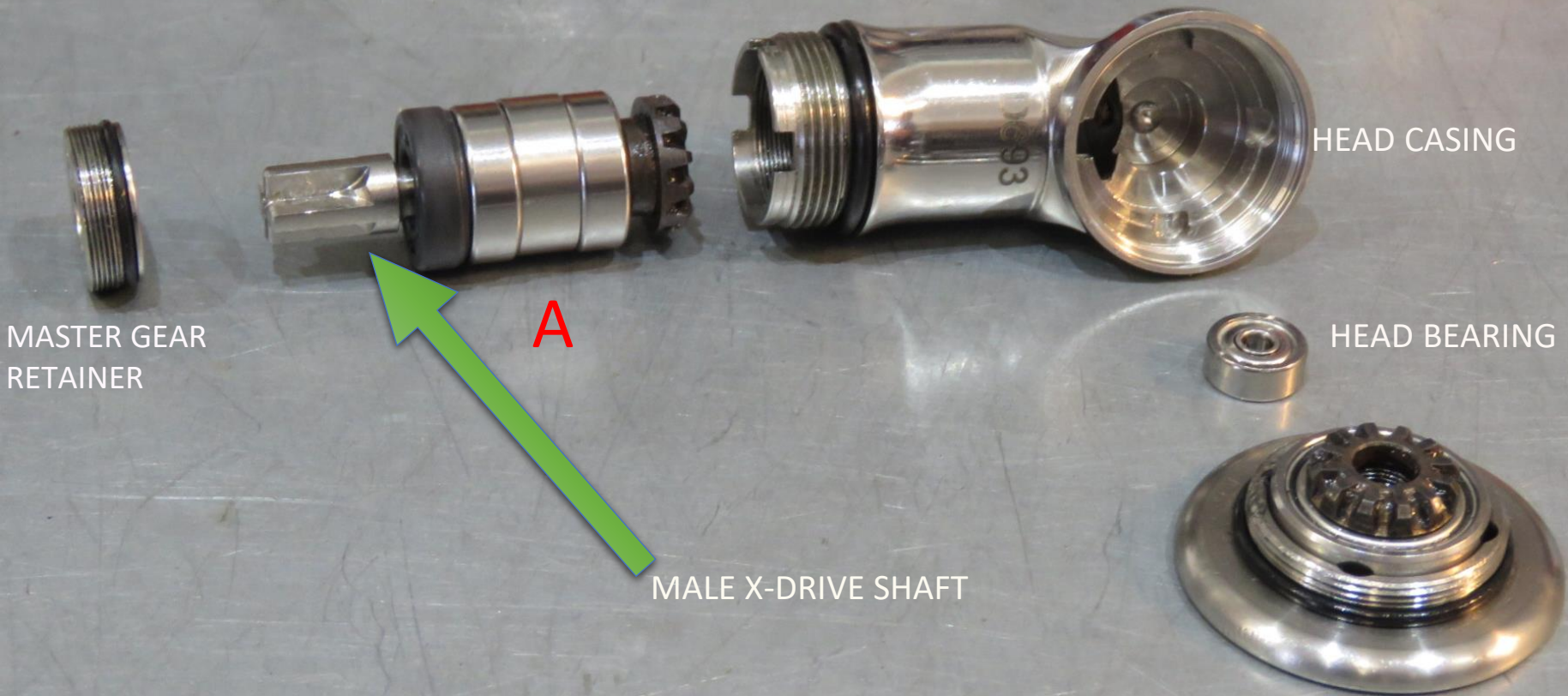


MASTER GEAR REMOVAL TOOL



GUARD REMOVAL TOOL

- **A:** MASTER GEAR ASSEMBLY
- **B:** SLAVE GEAR ASSEMBLY WITH DISC GUARD



DYNAMIC DISC COMPONENTS

MASTER GEAR

MASTER GEAR BEARINGS
AND SPACERS



MASTER GEAR
RETAINER

MALE X-DRIVE SHAFT



SEAL



HEAD CASING

HEAD BEARING

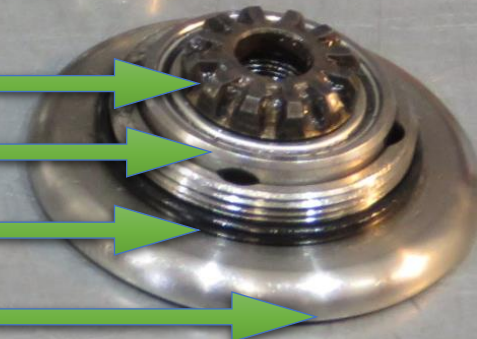


SLAVE GEAR

SLAVE GEAR BEARING

NOTE: THIN SEAL IN PLACE

HEAD GUARD



DISASSEMBLING THE HEAD

- UNSCREW THE NUT BEHIND THE HEAD IN AN ANTI-CLOCKWISE DIRECTION. IF STIFF USE 21MM SPANNER TO LOOSEN.



- SCREW THE HEAD LOCKING TOOL ON TO THE BACK OF THE HEAD CASING



- PLACE THE DISC REMOVAL TOOL OVER THE DISC




- ENGAGE THE DISC REMOVAL TOOL OVER THE DISC AND ROTATE ANTI-CLOCKWISE

- THEN REMOVE THE DISC



- INSERT THE GUARD REMOVAL TOOL





- ENSURING THE TWO PINS ARE SECURELY INSERTED INTO THE SMALL HOLES ON THE FACE OF THE GUARD.TIGHTEN THE D BY HAND CLOCKWISE

- UNSCREW THE LOCKING TOOL

- ATTACH GUARD SECURE
TOOL ROTATING CLOCKWISE
UNTIL TIGHT



- WITH THE GUARD REMOVAL TOOL FIRMLY FIXED IN A VICE. USING A SPANNER, ROTATE THE NUT ON THE TOOL ANTICLOCKWISE

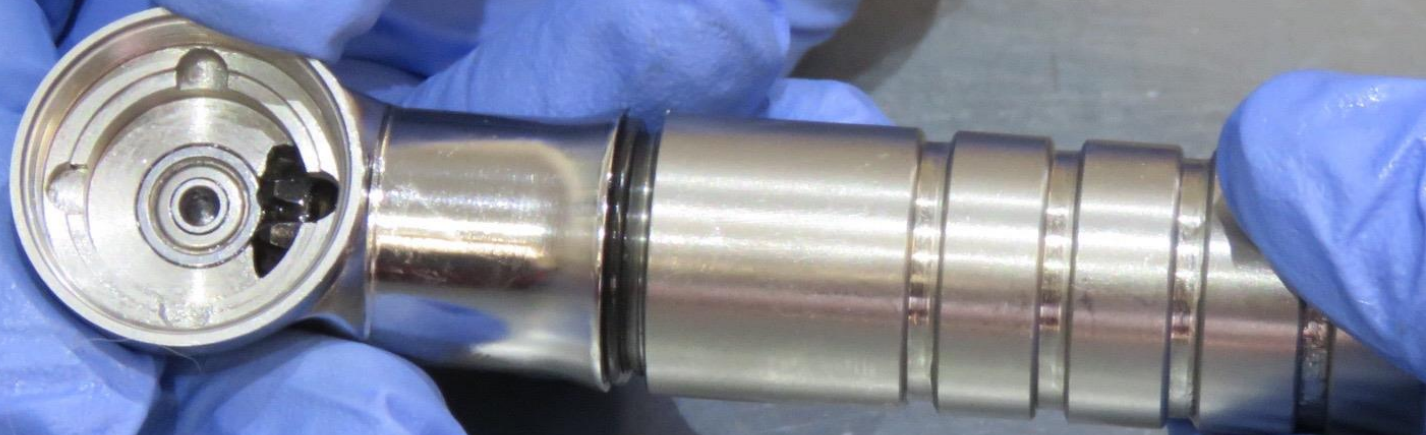
- REMOVE THE SLAVE GEAR ASSEMBLY



- REMOVE GUARD REMOVAL TOOL FROM GUARD



- REMOVE THE GUARD
SECURE TOOL



- REMOVE MALE X-DRIVE SHAFT BY ROTATING ANTI-CLOCKWISE



- IF HAVING DIFFICULTY UNDOING THE MASTER GEAR ASSEMBLY FROM THE MALE X-DRIVE SHAFT, THEN GENTLY SECURE IN A VICE. USING A SMALL FLAT HEAD SCREWDRIVER PLACE INTO THE MASTER GEAR AND THEN UNDO THE MALE X-DRIVE SHAFT ANTI-CLOCKWISE WITH AN ADJUSTABLE SPANNER

- INSERT MASTER GEAR RETAINER TOOL MAKING SURE THE MALE PINS LOCATE SECURELY INTO THE HOLES





- USING A SPANNER UNSCREW THE GEAR RETAINER TOOL ANTI-CLOCKWISE

- ONCE THE MASTER GEAR RETAINER TOOL BECOMES LOOSE, REMOVE IT ALONG WITH THE MASTER GEAR RETAINER





- INSERT MASTER GEAR REMOVAL TOOL, TIGHTENING IT IN A CLOCK-WISE DIRECTION

- USING FLAT HEAD SCREWDRIVER, LEVER OUT THE BLACK RUBBER SEAL AS SHOWN





- PULL MASTER GEAR
REMOVAL TOOL TO REMOVE
GEAR FROM HEAD CASING

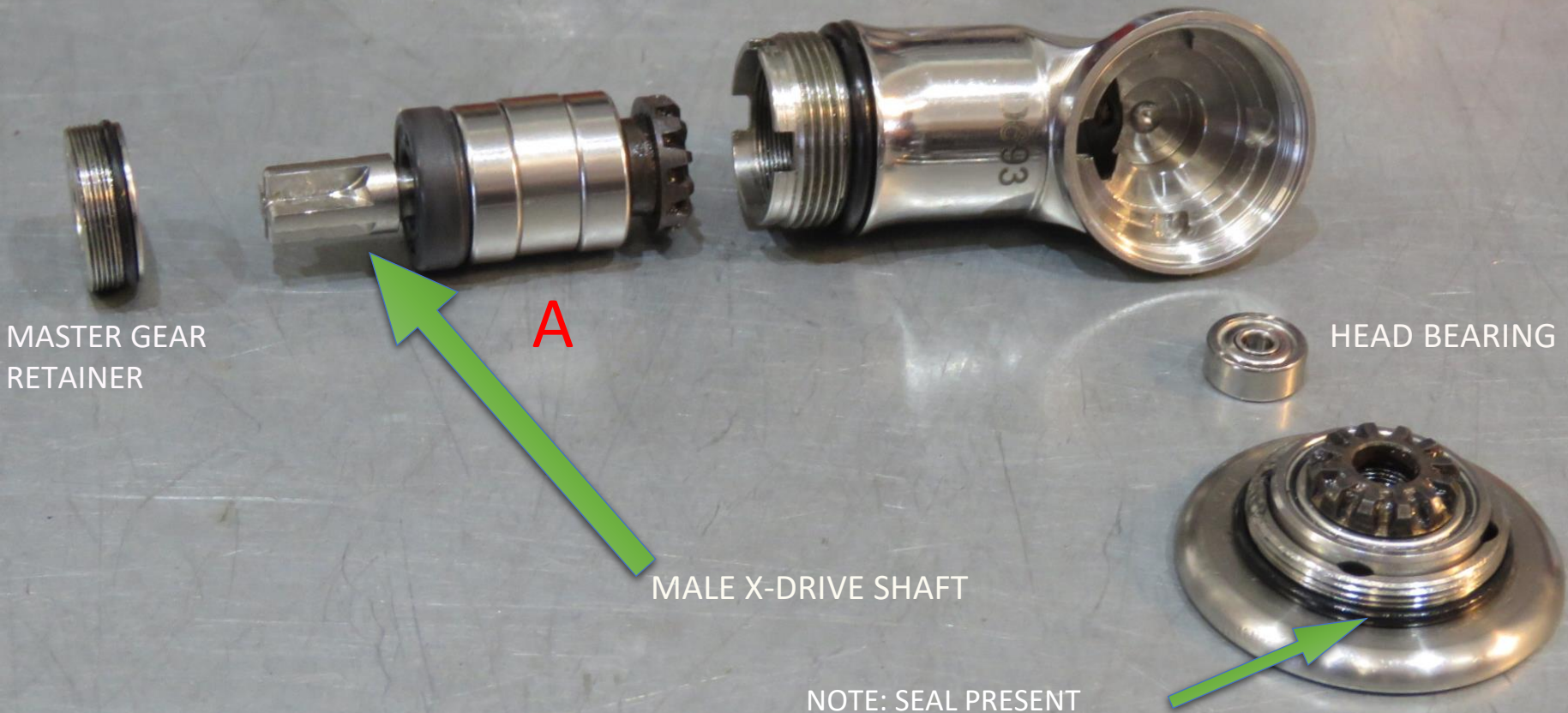
- USING FLATHEAD SCREWDRIVER, REMOVE HEAD BEARING, CLEAN HEAD CASING USING PAPER TOWELS OR WIPES






REASSEMBLING THE HEAD

- A: MASTER GEAR ASSEMBLY
- B: SLAVE GEAR ASSEMBLY WITH DISC GUARD





- ATTACH GUARD REMOVAL TOOL ENSURING THE PINS FIT SECURELY INTO THE HOLES ON THE FACE OF THE GUARD. **MAKE SURE THE BRASS WASHER IS IN PLACE AS SHOWN.** TIGHTEN THE DIAL WHILST RESTRICTING THE MOVEMENT OF THE GEAR WITH YOUR THUMB

- PUSH NEW HEAD BEARING INTO PLACE FIRMLY



- SREW HEAD CASING TOOL
CLOCKWISE UNTIL TIGHT

- REPLACE SLAVE GEAR ASSEMBLY, TIGHTEN CLOCKWISE

NOTE: THIN SEAL MUST BE IN PLACE



- REMOVE GUARD SECURE TOOL



- ADD A SMALL AMOUNT OF GREASE ONTO THE EXTERNAL EDGE OF THE MASTER BEARING ASSEMBLY



- PUSH MASTER GEAR ASSEMBLY FULLY DOWN INTO THE CASING, **THEN** PUSH THE SEAL FIRMLY DOWN USING THE GEAR TOOL UPSIDE DOWN UNTIL IT MEETS THE BEARING

1



3



2



4



- INSERT THE MALE X
DRIVE SHAFT AND
TIGHTEN BY HAND CLOCK-
WISE UNTIL SECURE



DYNAMIC
DENTAL EQUIPMENT

- PLACE THE GEAR RETAINER TOOL ONTO THE MASTER GEAR RETAINER



NOTE: SEAL MUST BE PRESENT

- INSERT THE MASTER GEAR RETAINER WITH THE GEAR RETAINER TOOL. TIGHTEN WITH A SPANNER IN A CLOCK-WISE ROTATION UNTIL SECURE

**TAKE CARE NOT TO
CROSS THREAD**

- SCREW THE
HEAD LOCKING
TOOL ON



- UNSCREW THE
GUARD REMOVAL
TOOL ANTI-
CLOCKWISE AND
REMOVE



A close-up, dimly lit photograph of a dental procedure. A handpiece is positioned near a patient's mouth, which is open. The patient's head is secured in a dental chair. The background shows the interior of the dental office with some equipment visible.

**.PUTTING THE
NEW DISC ON**

DYNAMIC
DENTAL EQUIPMENT



- INSERT THE DISC INTO THE DISC REMOVAL TOOL AND PLACE INTO THE GUARD. TIGHTEN THE DISC CLOCKWISE UNTIL SECURE

- UNDO THE LOCKING TOOL ANTI-CLOCKWISE AND REMOVE



- APPLY TWO SHOTS OF FOOD LUBE GREASE INTO THE GREASE NIPPLE AS SHOWN, AND AROUND THE MALE X-DRIVE AND THREAD



- ATTACH HEAD BACK ONTO THE SHAFT BY TIGHTENING THE NUT ON THE TOP OF THE SHAFT IN A CLOCKWISE DIRECTION. TAKING CARE NOT TO CROSS THREAD.
- **IMPORTANT ONLY HAND TIGHTEN**

NOTE: SEAL PRESENT

