



**DYNAMIC**

DENTAL EQUIPMENT

DIVERSE REFURBISHMENT



## YOU WILL NEED:

### AVAILABLE FROM YOUR DYNAMIC DISTRIBUTOR:

- DYNAMIC ADVANCED REPAIR KIT
- DYNAMIC BASIC REPAIR KIT
- MASTER GEAR ASSEMBLY
- SLAVE GEAR ASSEMBLY WITH DIVERSE GUARD
- GREASE GUN
- FOOD GRADE GREASE

### ALSO REQUIRED:

- ADJUSTABLE SPANNER
- BENCH VICE
- SMALL FLAT HEAD SCREWDRIVER



# DYNAMIC BASIC REPAIR KIT

DISC REMOVAL TOOL



HEAD LOCKING TOOL



21mm SPANNER





# DYNAMIC ADVANCED REPAIR KIT



MASTER GEAR  
RETAINER TOOL



GUARD SECURE TOOL



MASTER GEAR REMOVAL TOOL



GUARD REMOVAL TOOL



A: MASTER GEAR ASSEMBLY

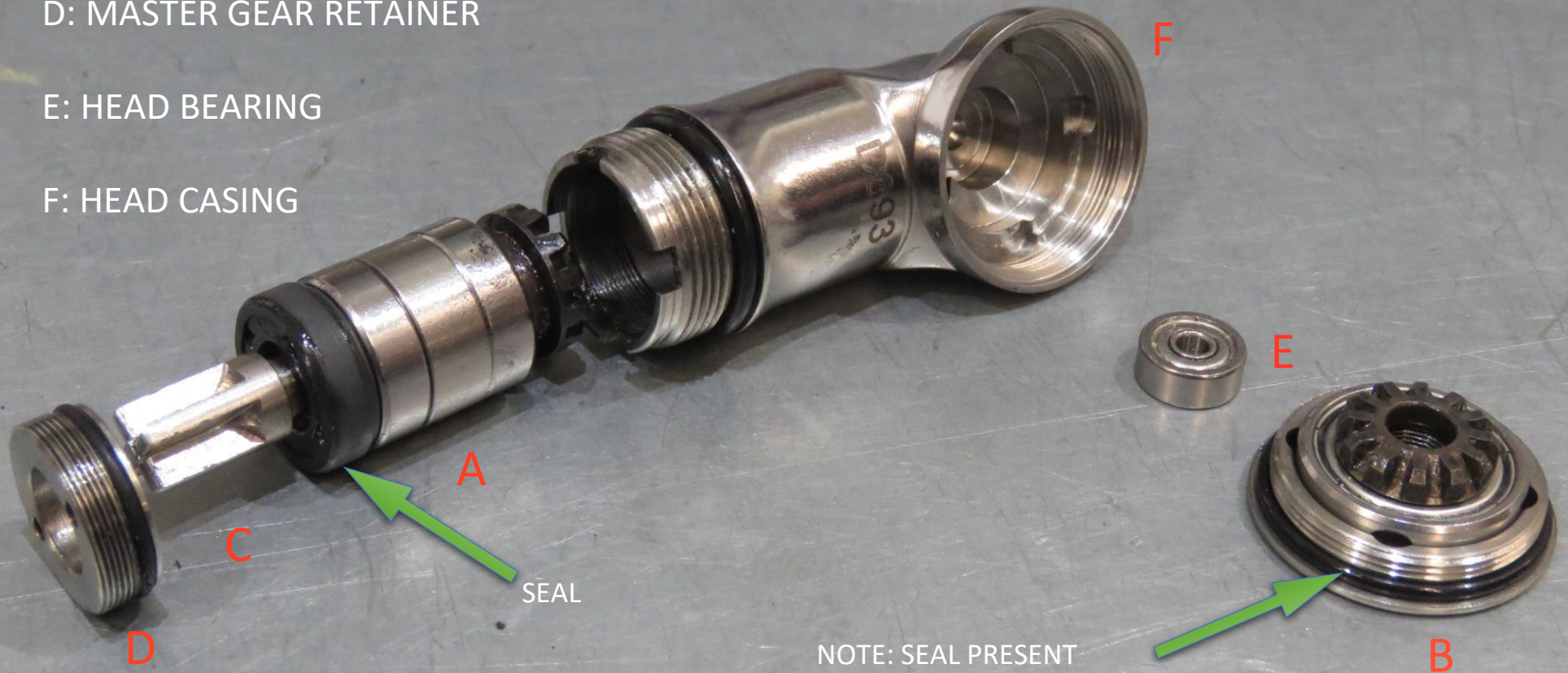
B: SLAVE GEAR ASSEMBLY AND GUARD

C: MALE X-DRIVE SHAFT

D: MASTER GEAR RETAINER

E: HEAD BEARING

F: HEAD CASING



# DIASSEMBLING THE HEAD



- UNSCREW THE NUT BEHIND THE HEAD IN AN ANTI-CLOCKWISE DIRECTION. IF STIFF USE 21MM SPANNER TO LOOSEN.



- ATTACH THE HEAD LOCKING TOOL IN A CLOCKWISE DIRECTION





- UNSCREW BURR ANTI-CLOCKWISE, AND REMOVE





- INSERT GUARD REMOVAL TOOL. MAKE SURE THE TWO PINS LOCATE INTO THE HOLES SECURELY



- TURN DIAL CLOCKWISE UNTIL TIGHT





- UNSCREW LOCKING TOOL



- ATTACH GUARD SECURE  
TOOL ROTATING CLOCKWISE  
UNTIL TIGHT





- WITH THE GUARD REMOVAL TOOL FIRMLY FIXED IN A VICE. USING A SPANNER, ROTATE THE NUT ON THE TOOL ANTICLOCKWISE



- REMOVE THE SLAVE GEAR ASSEMBLY

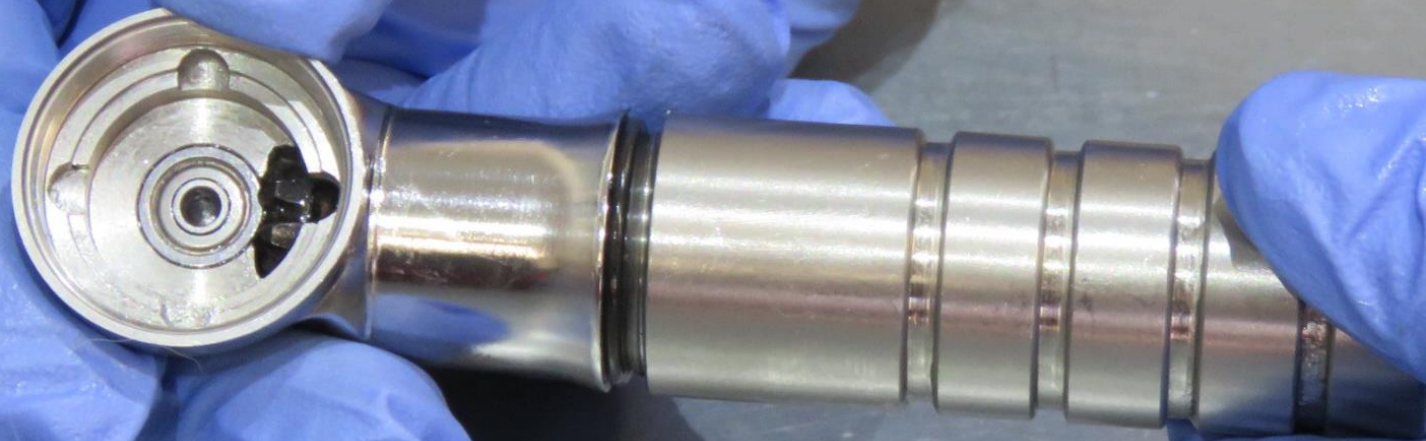




- REMOVE GUARD REMOVAL TOOL FROM GUARD



- REMOVE THE GUARD  
SECURE TOOL



- REMOVE MALE X-DRIVE SHAFT BY ROTATING ANTI-CLOCKWISE STOPPING THE GEAR TURNING USING YOUR THUMB





- IF HAVING DIFFICULTY UNDOING THE MASTER GEAR ASSEMBLY FROM THE MALE X-DRIVE SHAFT, THEN GENTLY SECURE IN A VICE. USING A SMALL FLAT HEAD SCREWDRIVER PLACE INTO THE MASTER GEAR AND THEN UNDO THE MALE X-DRIVE SHAFT ANTI-CLOCKWISE WITH AN ADJUSTABLE SPANNER





- INSERT MASTER GEAR RETAINER TOOL  
MAKING SURE THE MALE PINS SIT  
SECURELY IN THE HOLES AT THE BACK  
OF THE HEAD







- USING A SPANNER UNSCREW  
THE GEAR RETAINER TOOL IN  
AN ANTI-CLOCKWISE  
DIRECTION

- ONCE THE MASTER GEAR RETAINER TOOL BECOMES LOOSE, REMOVE IT ALONG WITH THE MASTER GEAR RETAINER







- INSERT MASTER GEAR REMOVAL TOOL, TIGHTENING IT IN A CLOCK-WISE DIRECTION

- USING FLAT HEAD SCREWDRIVER, LEVER OUT THE BLACK RUBBER SEAL AS SHOWN







- PULL MASTER GEAR  
REMOVAL TOOL TO REMOVE  
GEAR FROM HEAD CASING



- USING FLATHEAD SCREWDRIVER, REMOVE HEAD BEARING, CLEAN HEAD CASING USING PAPER TOWELS OR WIPES







# REASSEMBLING THE HEAD

A: MASTER GEAR ASSEMBLY

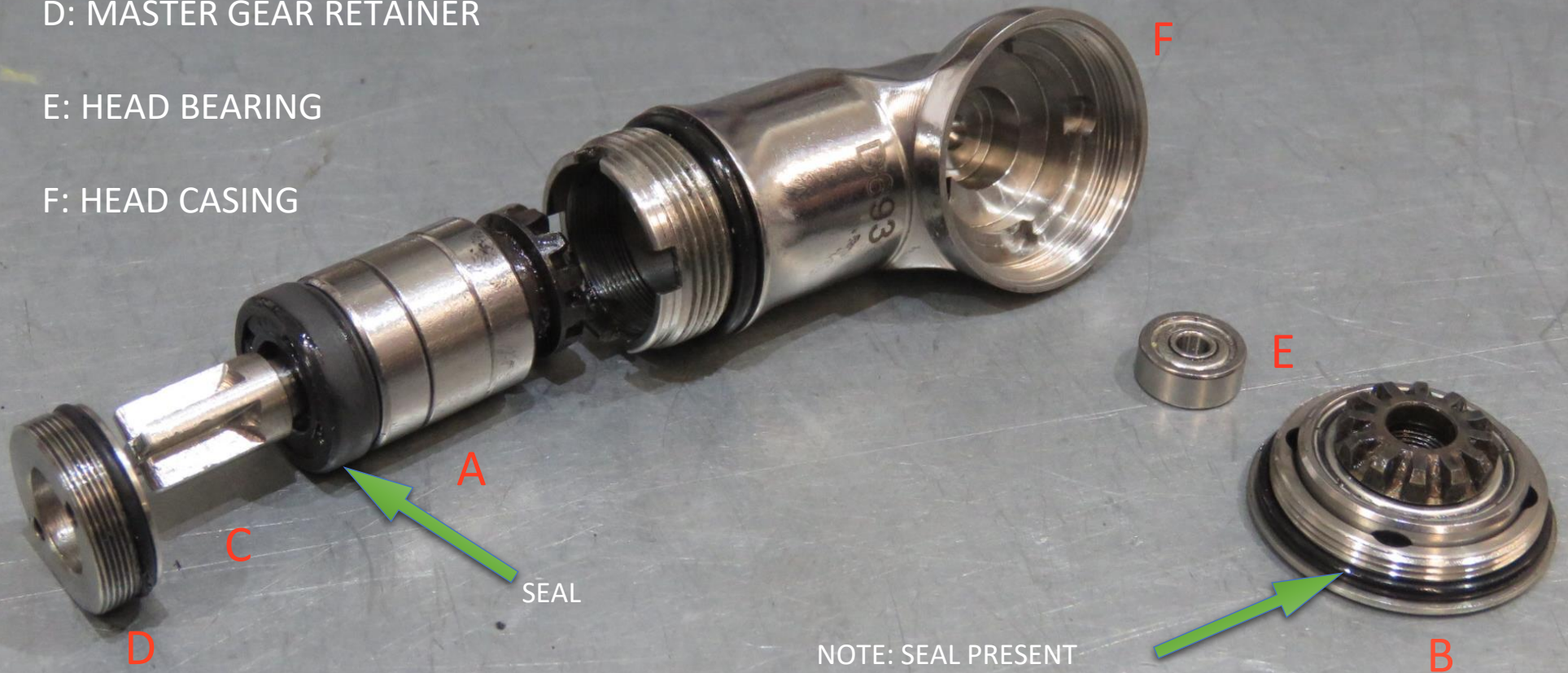
B: SLAVE GEAR ASSEMBLY AND GUARD

C: MALE X-DRIVE SHAFT

D: MASTER GEAR RETAINER

E: HEAD BEARING

F: HEAD CASING





- INSERT GUARD REMOVAL TOOL LOCATING THE TWO PINS IN THE HOLES

\*\*\*NEW SLAVE GEAR ASSEMBLY\*\*



# NOTE THIN SEAL MUST BE PRESENT#

- TIGHTEN THE THREAD SECURING THE MOVEMENT OF THE GEARS USING YOUR THUMB



- PUSH NEW HEAD BEARING INTO PLACE FIRMLY





- SREW HEAD CASING TOOL  
CLOCKWISE UNTIL TIGHT



- REPLACE SLAVE GEAR ASSEMBLY, TIGHTEN CLOCKWISE

NOTE: THIN SEAL IN PLACE





- UNSCREW GUARD SECURE TOOL AND REMOVE





- ADD A SMALL AMOUNT OF GREASE ONTO THE EXTERNAL EDGE OF THE MASTER BEARING ASSEMBLY





- PUSH MASTER GEAR ASSEMBLY FULLY DOWN INTO THE CASING, THEN PUSH THE SEAL FIRMLY DOWN USING THE GEAR TOOL UPSIDE DOWN UNTIL IT MEETS THE BEARING





- INSERT THE MALE X  
DRIVE SHAFT AND  
TIGHTEN BY HAND CLOCK-  
WISE UNTIL SECURE




- PLACE THE GEAR RETAINER TOOL ONTO THE MASTER GEAR RETAINER



**NOTE: SEAL MUST BE PRESENT**





- INSERT THE MASTER GEAR RETAINER WITH THE MASTER GEAR RETAINER TOOL. TIGHTEN WITH ADJUSTABLE SPANNER CLOCK-WISE UNTIL SECURE

**TAKE CARE NOT TO  
CROSS THREAD**



- SCREW THE HEAD  
LOCKING TOOL ON



- UNSCREW THE DIAL ON THE GUARD REMOVAL TOOL ANTI-CLOCKWISE, AND REMOVE





- SCREW IN NEW BURR  
CLOCKWISE UNTIL TIGHT,  
BUT DO NOT OVER TIGHTEN

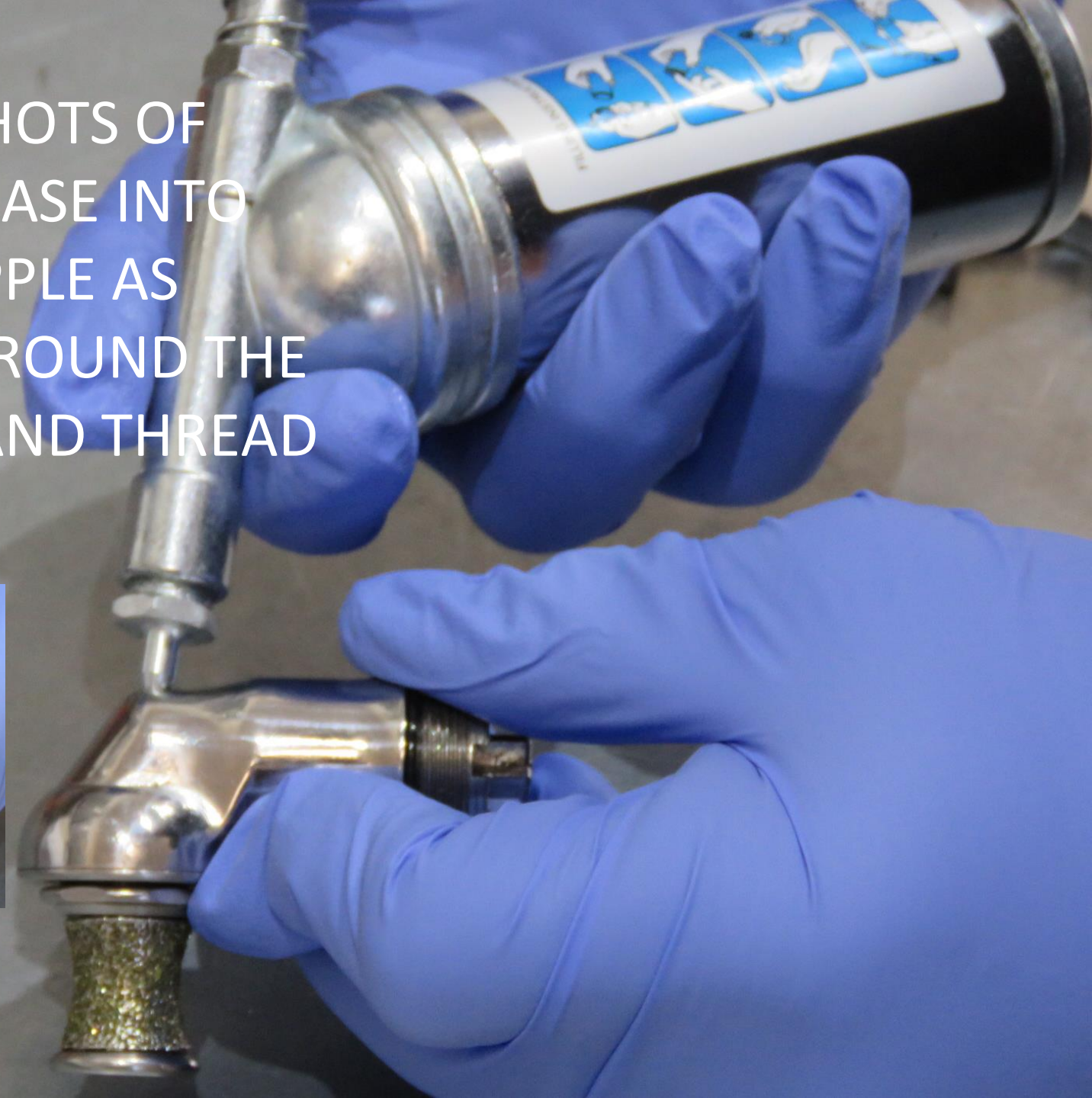


- UNSCREW LOCKING TOOL  
AND REMOVE





- APPLY TWO SHOTS OF FOOD LUBE GREASE INTO THE GREASE NIPPLE AS SHOWN, AND AROUND THE MALE X-DRIVE AND THREAD





- ATTACH HEAD BACK ONTO THE SHAFT BY TIGHTENING THE NUT ON THE TOP OF THE SHAFT IN A CLOCKWISE DIRECTION. TAKING CARE NOT TO CROSS THREAD.
- **IMPORTANT ONLY HAND TIGHTEN**

NOTE: SEAL PRESENT

