



HORSEPOWER DISC REFURBISHMENT

YOU WILL NEED:

AVAILABLE FROM YOUR DYNAMIC DISTRIBUTOR:

- DYNAMIC ADVANCED REPAIR KIT
- HORSEPOWER BASIC REPAIR KIT
- MASTER GEAR ASSEMBLY
- SLAVE GEAR ASSEMBLY WITH DISC GUARD
- GREASE GUN
- FOOD GRADE GREASE

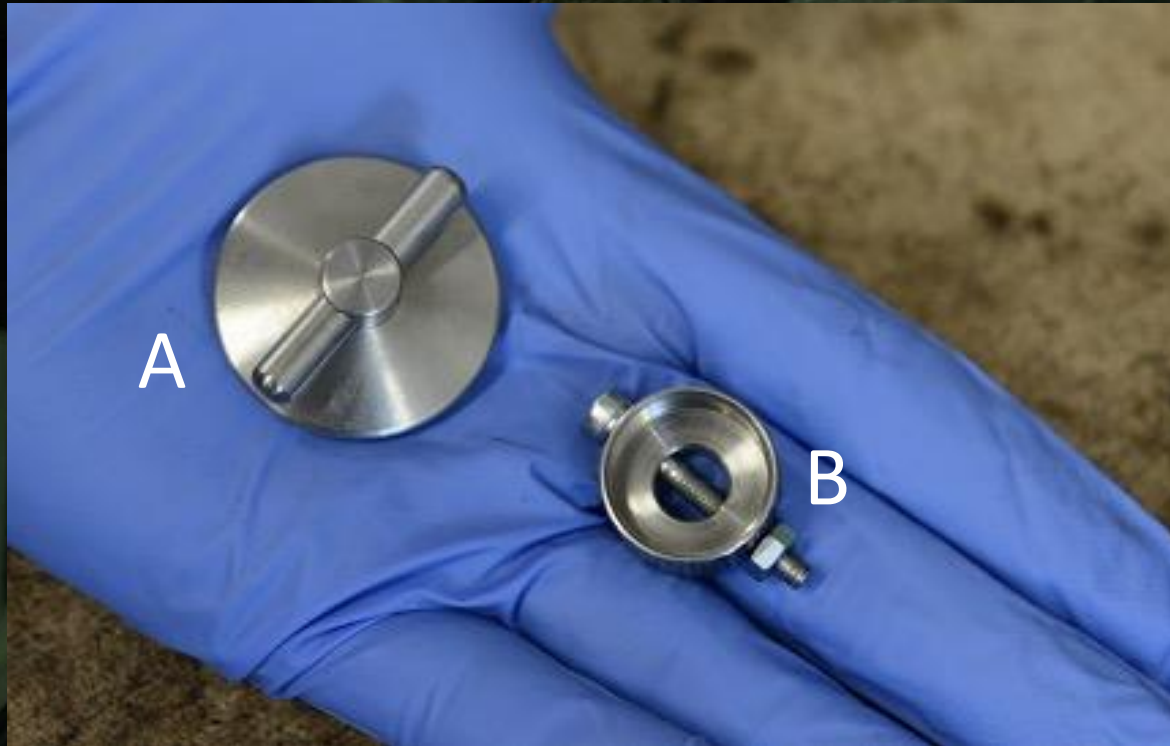
ALSO REQUIRED:

- ADJUSTABLE SPANNER
- BENCH VICE
- SMALL FLAT HEAD SCREWDRIVER
- LOCTITE 243
- HEAT GUN

HORSEPOWER BASIC REPAIR KIT

A) DYNAMIC DISC REMOVAL TOOL

B) HORSEPOWER HEAD LOCKING TOOL



DYNAMIC ADVANCED REPAIR KIT



MASTER GEAR
RETAINER TOOL



GUARD SECURE TOOL



MASTER GEAR REMOVAL TOOL



GUARD REMOVAL TOOL

- **A:** MASTER GEAR ASSEMBLY
- **B:** SLAVE GEAR ASSEMBLY WITH DISC GUARD

HEAD CASING

A

MASTER GEAR
RETAINER

HORSEPOWER
DRIVE SHAFT

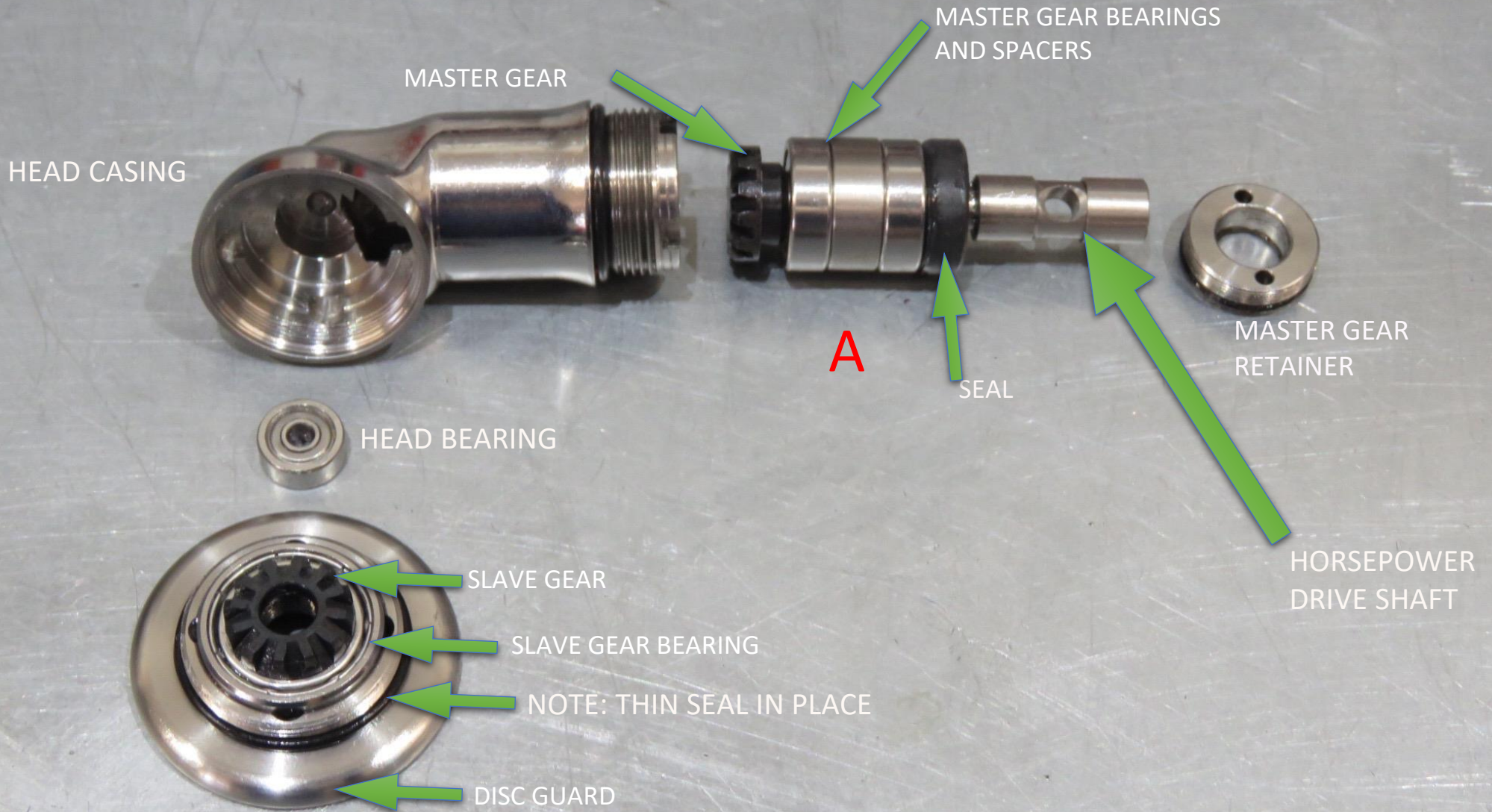
HEAD BEARING

B

NOTE: THIN SEAL IN PLACE



DISC HEAD COMPONENTS



DISASSEMBLING THE HEAD



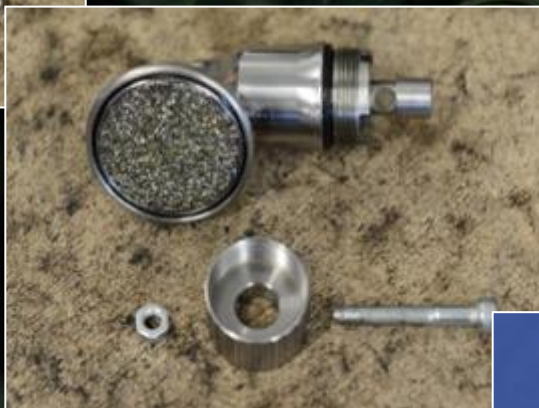
- USING HEAT GUN APPLY HEAT AROUND THE THREADED AREA

- UNSREW HEAD FROM THE SHAFT IN AN ANTI-CLOCKWISE DIRECTION

- SCREW THE HORSEPOWER SPECIFIC HEAD LOCKING TOOL ON TO THE BACK OF THE HEAD CASING



- MAKE SURE THE HOLES LINE UP AND THEN THREAD THE SCREW THROUGH THE LOCKING TOOL AND HEAD, AND TIGHTEN WITH THE NUT





- PLACE THE DISC REMOVAL TOOL OVER THE DISC



- ENGAGE THE DISC REMOVAL TOOL OVER THE DISC AND ROTATE ANTI-CLOCKWISE

- REMOVE THE OLD DISC AND DISCARD. REMOVE DISC REMOVAL TOOL



- ENSURING THE TWO PINS ARE SECURELY INSERTED INTO THE SMALL HOLES ON THE FACE OF THE GUARD. TIGHTEN THE DIAL BY HAND CLOCKWISE



- REMOVE THE LOCKING TOOL



- ATTACH GUARD SECURE
TOOL ROTATING CLOCKWISE
UNTIL TIGHT



- WITH THE GUARD REMOVAL TOOL FIRMLY FIXED IN A VICE. USING A SPANNER, ROTATE THE NUT ON THE TOOL ANTICLOCKWISE

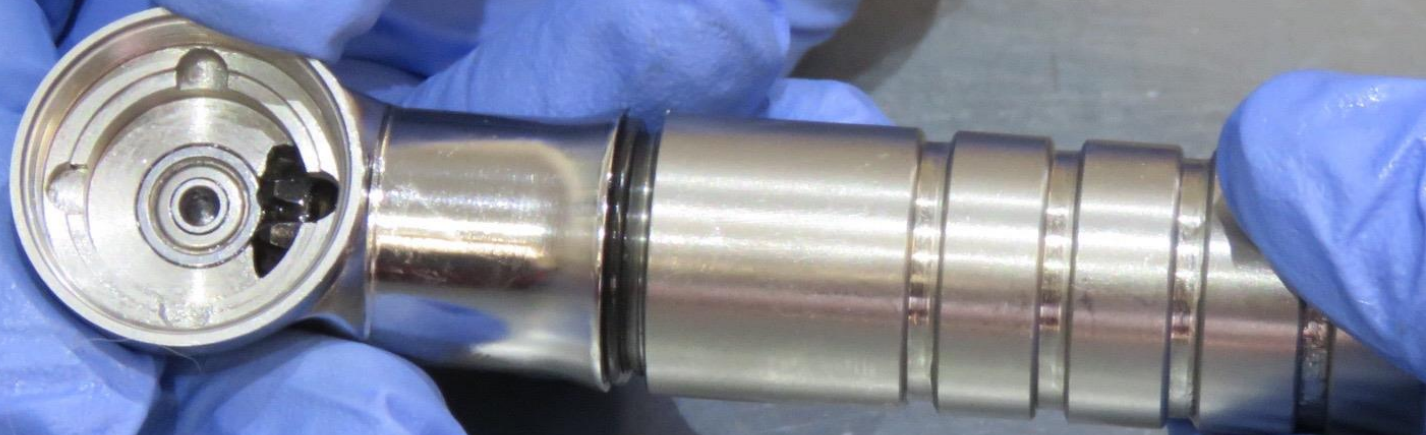
- REMOVE THE SLAVE GEAR ASSEMBLY



- REMOVE GUARD REMOVAL TOOL FROM GUARD



- REMOVE THE GUARD
SECURE TOOL



- STOP THE GEARS ROTATING BY USING YOUR THUMB, UNDO THE HORSEPOWER DRIVE SHAFT BY ROTATING ANTI-CLOCKWISE, AND REMOVE.



- IF HAVING DIFFICULTY UNDOING THE MASTER GEAR ASSEMBLY FROM THE HORSEPOWER DRIVE SHAFT, THEN GENTLY SECURE IN A VICE. USING A SMALL FLAT HEAD SCREWDRIVER PLACE INTO THE MASTER GEAR AND THEN UNDO THE MALE X-DRIVE SHAFT ANTI-CLOCKWISE WITH AN ADJUSTABLE SPANNER



- INSERT MASTER GEAR RETAINER TOOL MAKING SURE THE MALE PINS LOCATE SECURELY INTO THE HOLES





- USING A SPANNER UNSCREW THE GEAR RETAINER TOOL ANTI-CLOCKWISE

- ONCE THE MASTER GEAR RETAINER TOOL BECOMES LOOSE, REMOVE IT ALONG WITH THE MASTER GEAR RETAINER





- INSERT MASTER GEAR REMOVAL TOOL, TIGHTENING IT IN A CLOCK-WISE DIRECTION

- USING FLAT HEAD SCREWDRIVER, LEVER OUT THE BLACK RUBBER SEAL AS SHOWN





- PULL MASTER GEAR
REMOVAL TOOL TO REMOVE
GEAR FROM HEAD CASING

- USING FLATHEAD SCREWDRIVER, REMOVE HEAD BEARING, CLEAN HEAD CASING USING PAPER TOWELS OR WIPES



REASSEMBLING THE HEAD

- **A:** MASTER GEAR ASSEMBLY
- **B:** SLAVE GEAR ASSEMBLY WITH DISC GUARD

HEAD CASING

A


MASTER GEAR
RETAINER

HORSEPOWER
DRIVE SHAFT

HEAD BEARING

B

NOTE: THIN SEAL IN PLACE



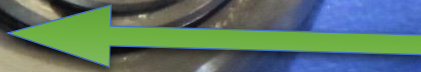
- ATTACH GUARD REMOVAL TOOL ENSURING THE PINS FIT SECURELY INTO THE HOLES ON THE FACE OF THE GUARD. **MAKE SURE THE BRASS WASHER IS IN PLACE AS SHOWN.** TIGHTEN THE DIAL WHILST RESTRICTING THE MOVEMENT OF THE GEAR WITH YOUR THUMB

- PUSH NEW HEAD BEARING INTO PLACE FIRMLY



- SREW GUARD SECURE
TOOL CLOCKWISE UNTIL
TIGHT

- REPLACE SLAVE GEAR ASSEMBLY, TIGHTEN CLOCKWISE



NOTE: THIN SEAL IN PLACE



- REMOVE GUARD SECURE TOOL



- ADD A SMALL AMOUNT OF GREASE ONTO THE EXTERNAL EDGE OF THE MASTER BEARING ASSEMBLY



- PUSH MASTER GEAR ASSEMBLY FULLY DOWN INTO THE CASING, **THEN** PUSH THE SEAL FIRMLY DOWN USING THE GEAR TOOL UPSIDE DOWN UNTIL IT MEETS THE BEARING

1



3



2



4



- INSERT HORSEPOWER DRIVE SHAFT BY ROTATING CLOCKWISE

D728

- PLACE THE GEAR RETAINER TOOL ONTO THE MASTER GEAR RETAINER



NOTE: SEAL MUST BE PRESENT

- INSERT THE MASTER GEAR RETAINER WITH THE GEAR RETAINER TOOL. TIGHTEN WITH A SPANNER IN A CLOCK-WISE ROTATION UNTIL SECURE

**TAKE CARE NOT TO
CROSS THREAD**



- SCREW THE HORSEPOWER SPECIFIC HEAD LOCKING TOOL ON TO THE BACK OF THE HEAD CASING



- MAKE SURE THE HOLES LINE UP AND THEN THREAD THE SCREW THROUGH THE LOCKING TOOL AND HEAD, AND TIGHTEN WITH THE NUT



- UNSCREW THE
GUARD REMOVAL
TOOL ANTI-
CLOCKWISE AND
REMOVE



A close-up, dimly lit photograph of a dental procedure. A handpiece is positioned near a patient's mouth, which is open. The patient's head is secured in a dental chair. The background is dark, with some vertical lines visible on the left side.

**.PUTTING THE
NEW DISC ON**

DYNAMIC
DENTAL EQUIPMENT



- INSERT THE NEW DISC INTO THE DISC REMOVAL TOOL AND PLACE INTO THE GUARD

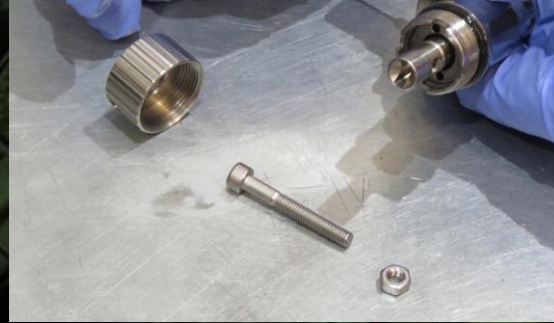


- TIGHTEN THE DISC IN A CLOCK-WISE ROTATION UNTIL SECURE.





- UNDO THE SMALL NUT AND REMOVE THE BOLT



- UNSCREW THE HORSEPOWER SPECIFIC HEAD LOCKING TOOL ON TO THE BACK OF THE HEAD CASING AND REMOVE



- 
- APPLY A LITTLE FOOD LUBE GREASE AS SHOWN, AROUND THE HORSEPOWER DRIVE SHAFT AND THREAD



- APPLY LOCTITE 243 TO THE THREADED AREA

- ATTACH HEAD ONTO THE SHAFT IN A CLOCKWISE DIRECTION